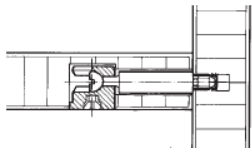
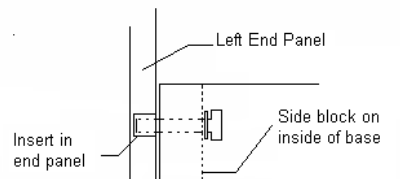


## Assembly Instructions for Shelving Starter with Adder

**Step One:** Place base on floor with finished edge facing out and groove for back facing up.

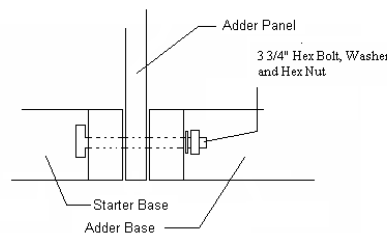
**Step Two:** Attach left hand end panel to base. Align grooves for back panel with grooved rail on base. Secure with hand tightened 1-3/4" hex bolt and washer through each hole in the base into the threaded insert in the end panel.



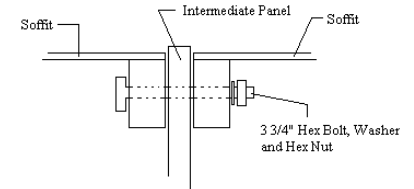
**Step Three:** For 72"h and 82"h units, insert the bottom half of the back then minifix the center rail to the left end panel at the groove for the back panel.

**Step Four:** Attach adder panel and the adder base to the base with left hand panel already attached.

**Step Five:** Slide back into the grooves on both end panels and the base rail. For 72"h or 82"h, slide in the top half of the back.



**Step Six:** Place shelving soffit between the left and right hand end panels aligning the side holes in the soffit with those in the end panels. Secure with hand tightened 1-3/4" hex bolt and washer through each hole in the soffit into the threaded insert in the end panel. Repeat with adder soffit. Note 72 and 82h units have inverted soffit.



**Step Seven:** Close run with the last end panel from the starter kit (See Step Two)

**Step Eight:** Tighten all hex bolts with socket or wrench. Adjust base, top and end panels to straighten the units.

**Step Nine: OXFORD SHELVING ONLY:** Place base shelf with counter sunk holes facing up on the base frame. Use the two 1-1/2" screws in each hole to secure the base shelf to the frame.

**Step Ten:** Set each adjustable shelf with four shelf clips in notches on the shelves.

