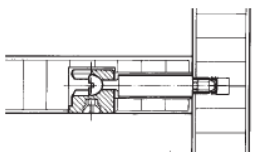
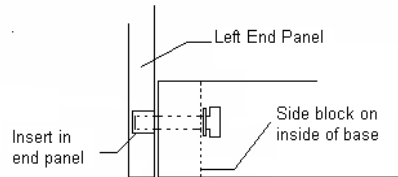




# Assembly Instructions for Shelving Starter

**Step One:** Place base on floor with finished edge facing out and groove for back facing up.

**Step Two:** Attach left hand end panel to base. Align grooves for back panel with grooved rail on base. Secure with hand tightened 1-3/4" hex bolt and washer through each hole in the base into the threaded insert in the end panel.

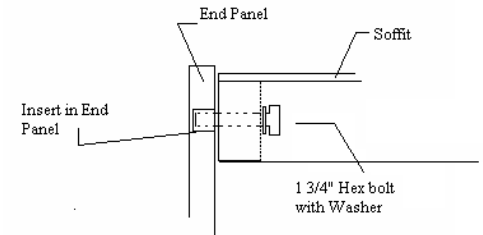


**Step Three:** For 72"h and 82"h units slide in only the bottom half of the back into the grooves in the end panel and in the base. Connect the center rail to the end panel by using the Minifix fastener while resting the rail on the back piece.

**Step Four:** Repeat step two for right hand end panel.

**Step Five:** For 60"h and lower units, slide back into the grooves on both end panels and the base rail. For 72"h and 82"h units slide the top half of the back into the grooves.

**Step Six:** Place shelving soffit between the left and right hand end panels aligning the side holes in the soffit with those in the end panels and with the grooves in the soffit. Secure with hand tightened 1-3/4" hex bolt and washer through each hole in the soffit into the threaded insert in the end panel. Note 72 and 82h units have inverted soffit.



**Step Seven:** Tighten all hex bolts with socket or wrench. Adjust base, top and end panels to straighten the unit.

**Step Eight:** Set each adjustable shelf with four shelf clips in notches on the shelves. The bottom shelf while adjustable should be on the lowest set of holes to cover the base frame.

**NOTE:** Double faced units are assembled the same way except there are two sides.

